



We've come a long way....and have a long way to go.....

Dominic DiCicco | Manager  
Environmental Policy and Fuel Quality

# Sustainability (18<sup>th</sup> Annual) Report

***“Contributing to a better world has always been a core value at Ford, and our commitment to sustainability is a key part of who we are. Our vision is to create an even more dynamic and vibrant company that improves people’s lives around the world and creates value for all of our stakeholders.”***

William Clay Ford, Jr.,  
Executive Chairman,  
Ford Motor Company

Jim Hackett,  
President and Chief Executive Officer,  
Ford Motor Company



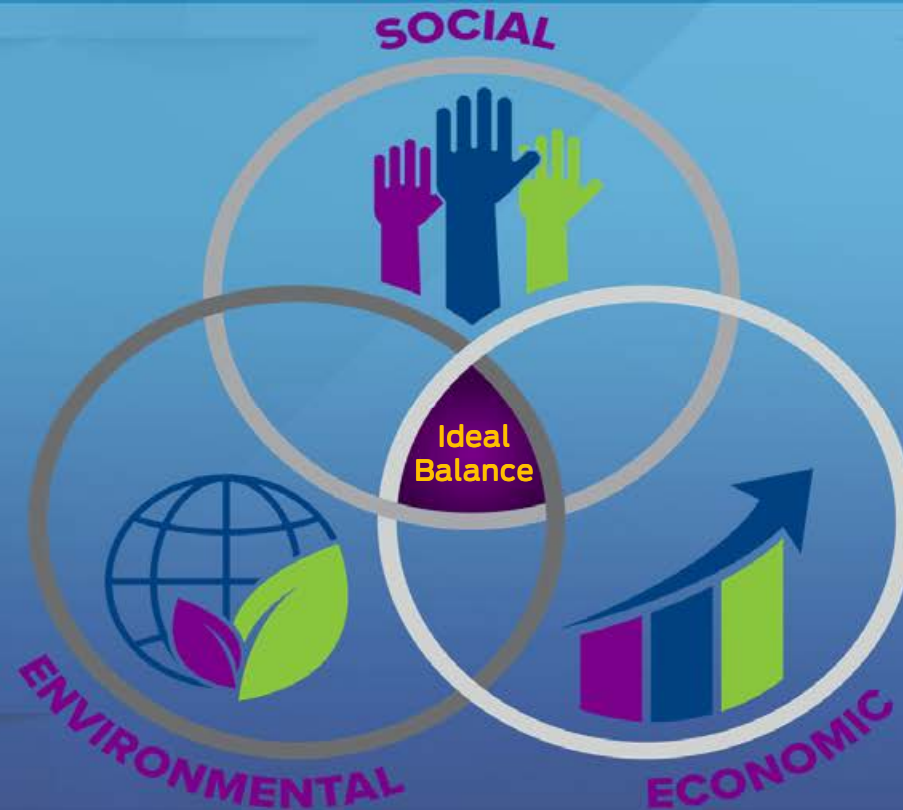
*Summary Report and  
Full Version available on  
Ford website*

# What Sustainability Means To Us

Bill Ford Video Sustainability Report Website



# Sustainability Integration



# Our Plan



**CO<sub>2</sub>**

**30% reduction**  
between 2010 and 2025



**Energy**

**Met 30% reduction**  
between 2011 and 2016



**Water**

**30% reduction**  
between 2015 and 2020



**Waste**

**40% reduction**  
between 2011 and 2016

***Ford Is Committed To Reducing The Environmental Footprint Of Our Direct Operations, Our Vehicles, And Our Supply Chain.***



# Our Operations

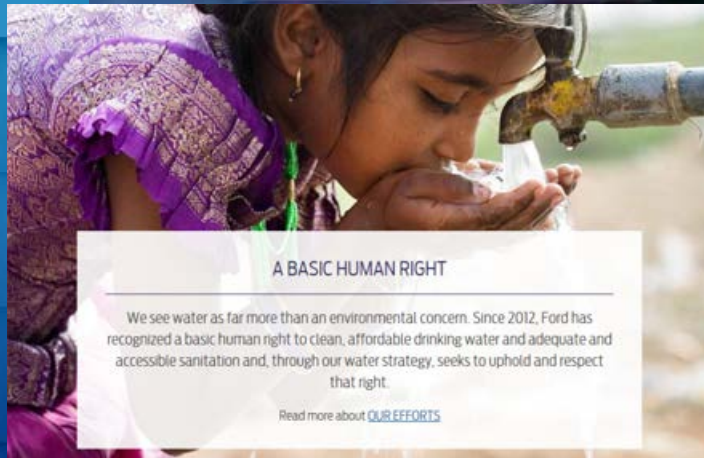


- *Living Roof*
- *Storm Water Management*
- *Energy Use Management*
- *Waste Management*



***Sustainability At Ford Manufacturing Facilities***

# Corporate Water Strategy



## A BASIC HUMAN RIGHT

We see water as far more than an environmental concern. Since 2012, Ford has recognized a basic human right to clean, affordable drinking water and adequate and accessible sanitation and, through our water strategy, seeks to uphold and respect that right.

Read more about [OUR EFFORTS](#)



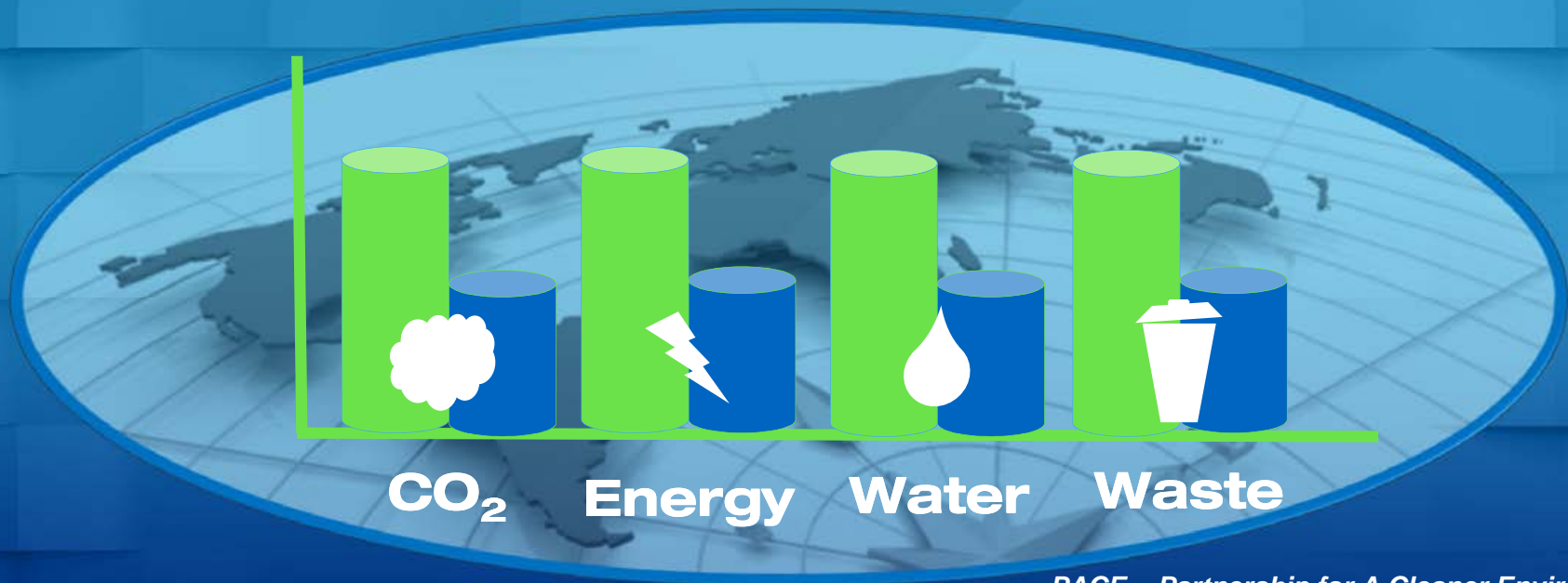
***Water Is Far More Than An Environmental Concern  
Ford Recognizes The Human Right To Clean, Affordable Water***

# Energy And Waste Management





# Our Suppliers



*PACE = Partnership for A Cleaner Environment*

***Through PACE, Ford Will Share Leading Practices And Energy Reduction Techniques With Select Suppliers To **Green** Our Supply Chain.***

# Life Cycle Assessment



**Mining Ores or  
Raw Energy  
Carriers**



**Producing  
Materials and  
Fuels**



**Fabricating  
Parts**



**Vehicle  
Assembly**



**Vehicle Use and  
Maintenance**



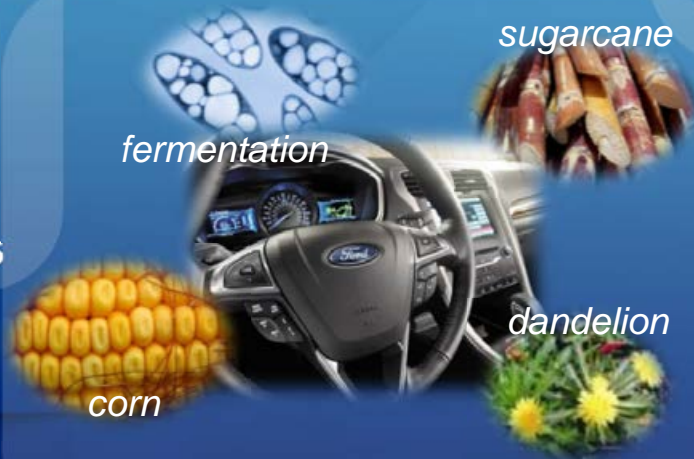
**End-of  
-Life**



# Sustainable Materials



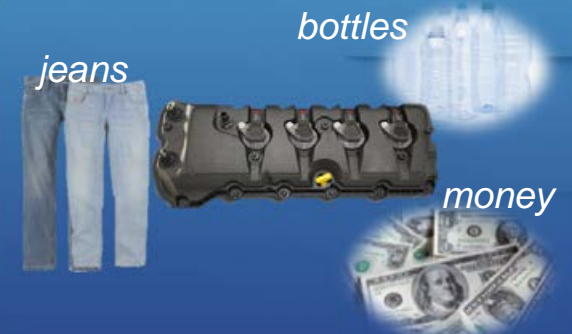
## Bio-based Foams



## Bio-based Resins

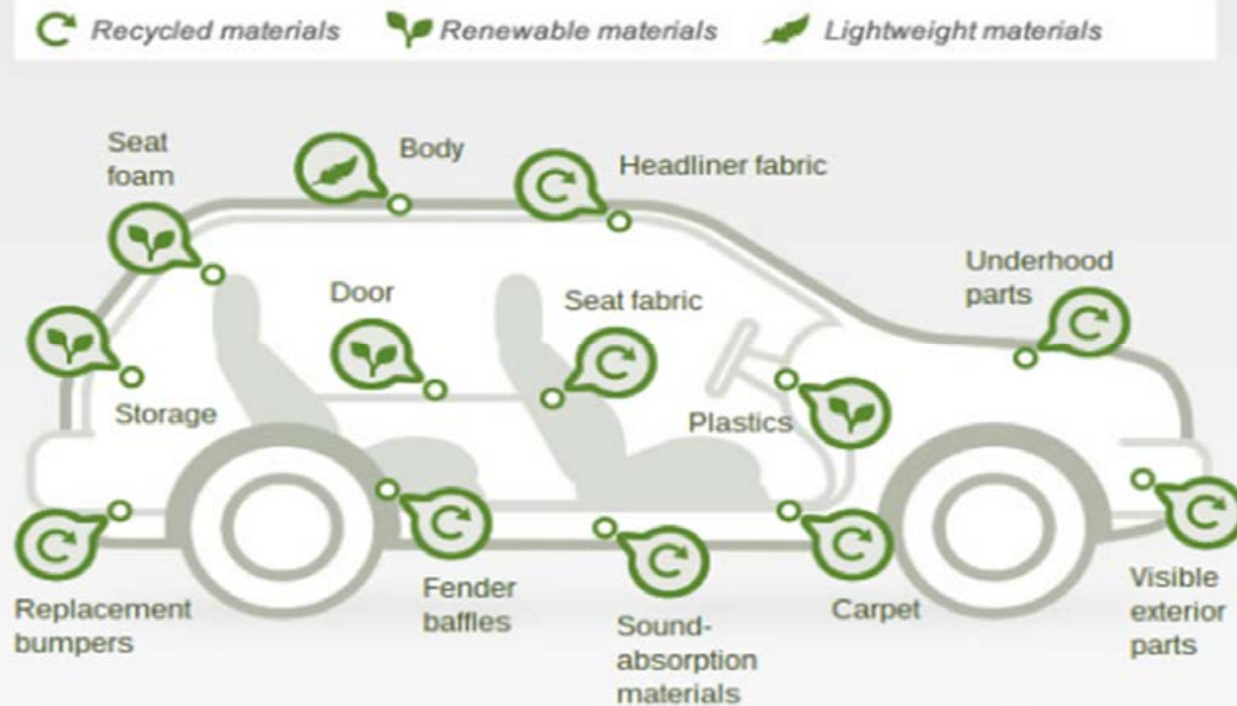


## Natural Fiber Composites



## Recycled Materials

# Sustainable Materials In The Vehicle



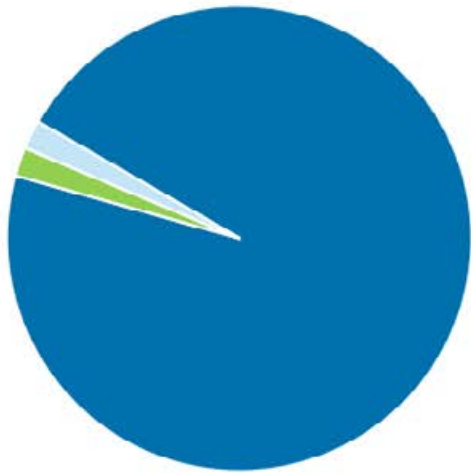


# Our Vehicles

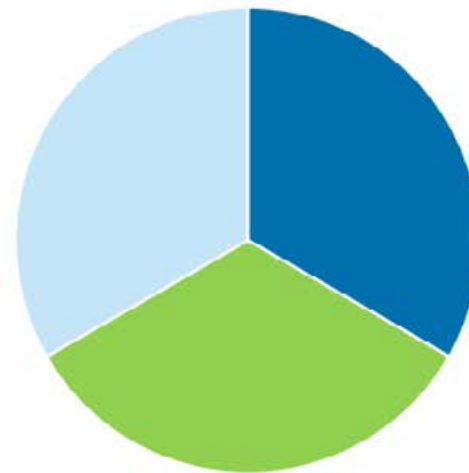


# Variety Of Propulsions Choices By 2030

Global Industry 2017



Global Industry Outlook 2030



■ Internal Combustion Engine (ICE) ■ Hybrid Electric Vehicle (HEV) ■ Battery Electric Vehicle (BEV) / Plug-in Hybrid (PHEV)

***Electrification Will Become More Common***

# Ford F-150 Diesel



- Arriving this spring, F-150 with 3.0-liter Power Stroke<sup>®</sup> engine provides best-in-class diesel 250 horsepower and 440 lb.-ft. of torque – and makes for a sixth engine choice for F-150 customers

- Ford F-150 is delivering another first – its all-new 3.0-liter Power Stroke<sup>®</sup> diesel engine targeted to return an EPA-estimated rating of 30 mpg highway
- Full-size truck customers who want strong fuel economy while towing and hauling win big; 3.0-liter Ford Power Stroke<sup>®</sup> V6 diesel engine delivers best-in-class diesel towing and payload



- And yes, the 3.0-liter Power Stroke<sup>®</sup> diesel engine is B20 compatible!

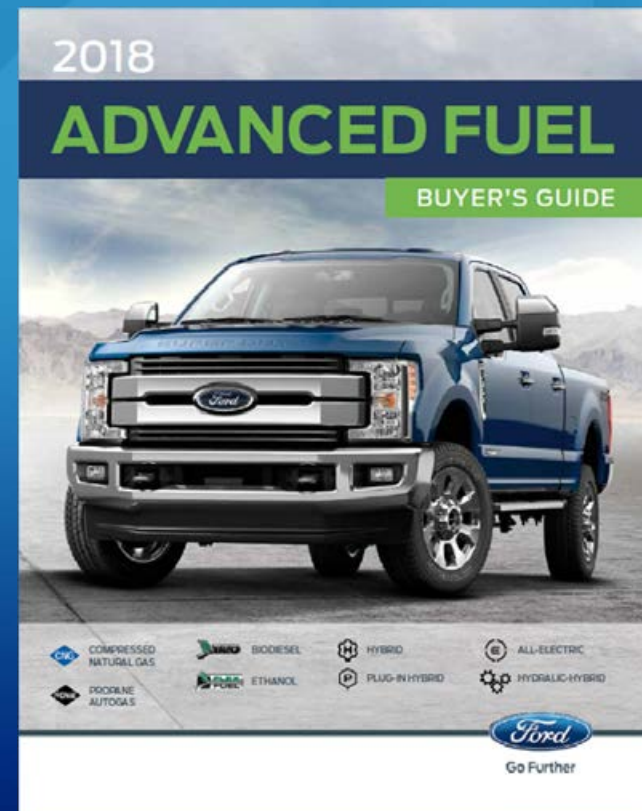
# 2018 Advanced Fuel Buyers Guide

## NEW/ENHANCED

### Broad Portfolio of Vehicles

- Cost of Ownership
- Infrastructure Support
- Customer/Engineering Support
- List of Developers / Installers
- Advanced Fuel Incentives
- New eQVM Listings

***Comprehensive Document For Commercial Vehicle Centers And Customers, Offering Individual Fuel Solutions***












# QVM Options



					
	Transit Connect Van/Wagon	Transit Van/Passenger Wagon	Transit Cutaway/ Chassis Cab	E-450 Cutaway Chassis	E-450 Stripped Chassis
<b>Advanced Fuel Type</b>					
Ethanol (E85)	X*	X**	X**	X	X
<b>Biodiesel (B20)</b>		X	X		
CNG	X	X	X	X	X
Propane		X	X	X	X
<b>Electrification Options</b>					
HEV		X	X	X	X
PHEV					
BEV				X	X
Hydraulic Hybrid				X	X



FORD FLEET

# QVM Options *(cont.)*



**F-150**  
Pickup

**F-250/350/450**  
Super Duty® Pickup

**F-350/450/550**  
Super Duty  
Chassis Cab

**F-650/F-750**  
Medium Duty  
Chassis Cab

**F59 Commercial/F53 RV**  
Stripped Chassis

## Advanced Fuel Type

Ethanol (E85)

X

X

X

**Biodiesel (B20)**

**X**

**X**

**X**

**X**

CNG

X

X

X

X

X

Propane

X

X

X

X

X

## Electrification Options

HEV

X

PHEV

X

BEV

X

Hydraulic Hybrid

X

# Social Sustainability



# Our Mobility Vision

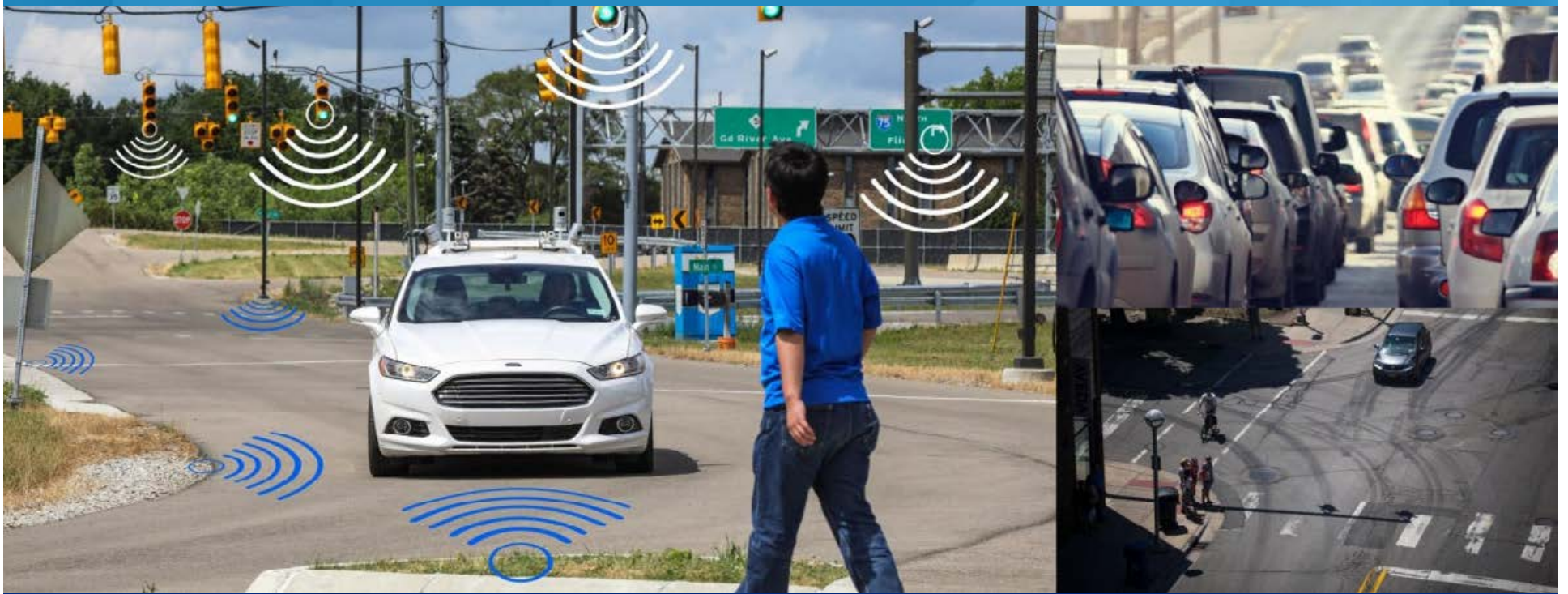
Ford Motor Company was built on the belief that **freedom of movement drives human progress**. It's a belief that has always fueled our passion to create great cars and trucks.

And today, it drives our commitment to become the world's most **trusted** mobility company, designing **smart** vehicles for a smart world that help people move more **safely**, confidently and **freely**.

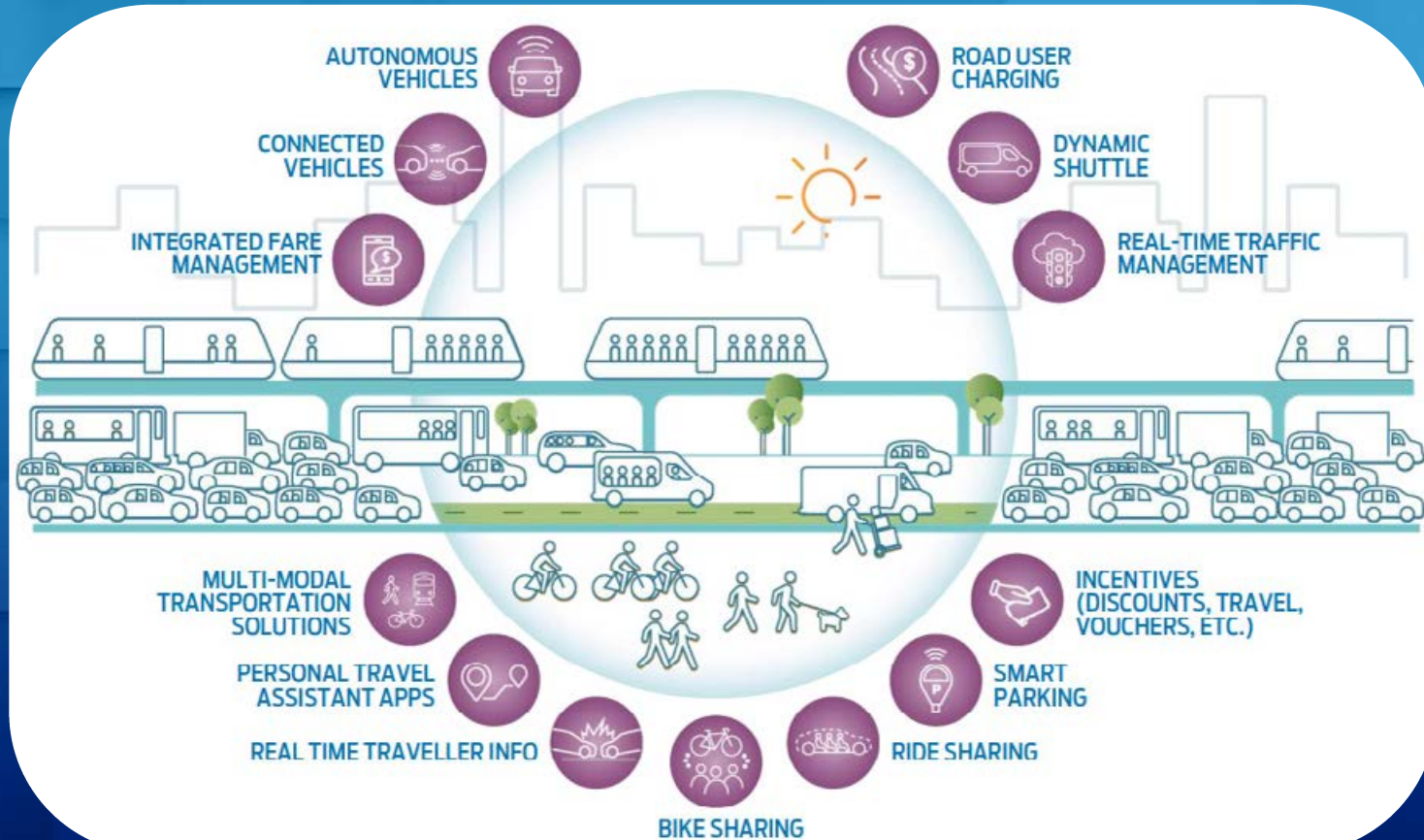
***Smart Vehicles In A Smart World***



# Vehicle-Environment Communications



# Smart Vehicles In A Smart World





# The City Of Tomorrow...

City Of Tomorrow Video Media Website





THANK YOU!